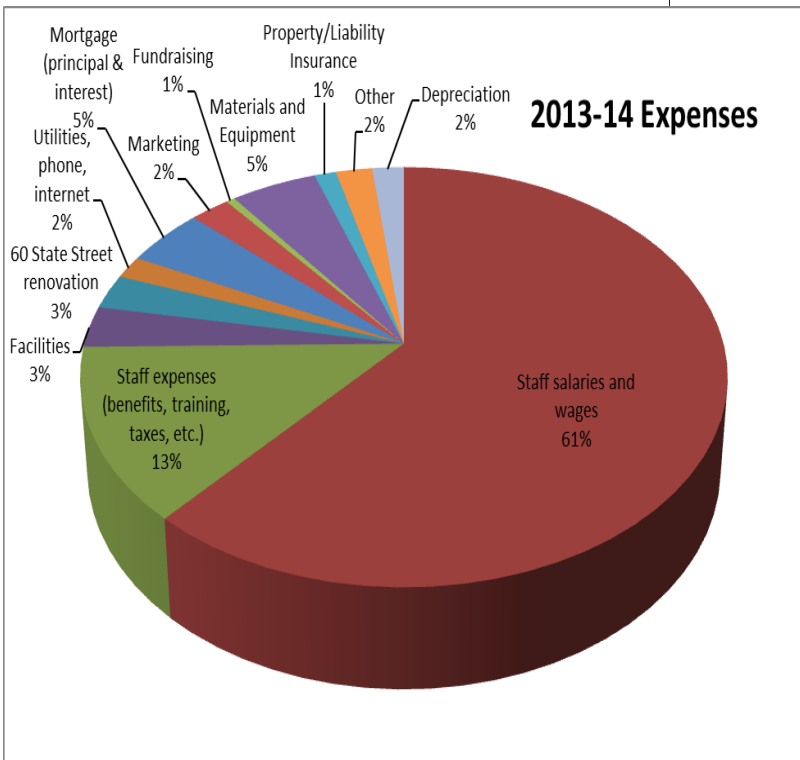
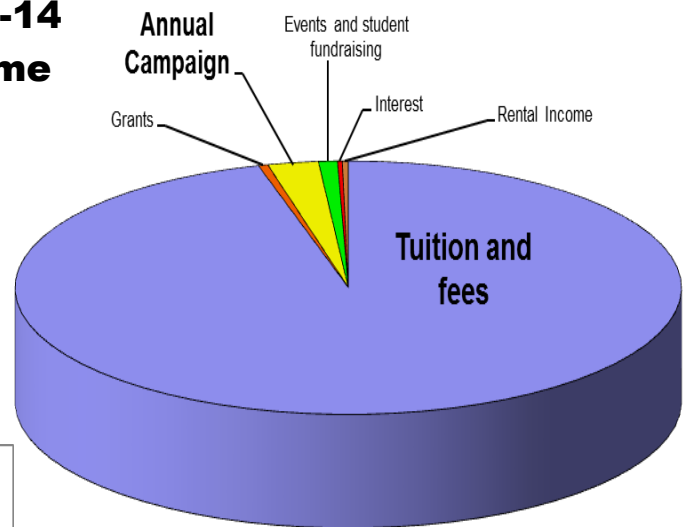


The 2013-14 Fiscal Year Operations

Total Revenues: **\$1,681,621.00**
 Total Expenditures: **\$1,646,142.00**
 Difference remaining **\$35,479**

Equity:
 Estimated total value of all assets at the end of the 13-14 fiscal year: \$3,129,890
 Year-end cash/savings reserve: \$444,588.

2013-14 Income



In addition to the operating revenue and expenses above, \$248,000 was donated toward the capital campaign (and another \$357,000 was pledged toward future phases of the campaign). \$233,503 was spent on purchasing 60 State St, including the down payment and the expenses associated with the purchase.

Financial Stability and Growth

Enrollment was its highest of any previous year, at 167, P-8. The 2013-14 school year marked quick progress toward enrolling our target number of students to operate at an economy of scale. Once our new buildings are completely renovated, Rainbow will have enough space to enroll 16-20 students per grade, and will meet our ideal size for our educational program and for our business model.

In the last seven years, Rainbow has significantly raised teacher salaries and benefits, vastly improved academics, added extensive programming, tripled the amount of financial aid awarded, and more than doubled the size of campus, all while expanding reserves, and building a strong financial base.



Facilities manager, Max Mraz, with students at the ribbon cutting ceremony for the new playground on October 13, 2013. Students participated in designing the fantastical Gnome Village and helped with construction.

2013-14 Annual Report



Spanish teacher and sustainability coordinator, Cynthia Calhoun (left) with Renee Owen, executive director, (second from left) accepting the Green Schools award.

Dear Rainbow Friend,

In July, 2013, my summer letter to the community boldly declared that the 2013-14 school year was the beginning of a new era for Rainbow Community School. It turned out to be an even bigger year than imagined. Our founders, as visionary as they were, could not have predicted that 38 years after founding their little school, that Rainbow would have a five acre campus and 195 students enrolled through 8th grade. After years of being focused primarily inward – perfecting our systems, ratcheting up academic rigor, hiring a world-class faculty, and improving our facilities – the year 2014 marked the turning point in

which we exceeded all of our own expectations. Through all the change, the most important elements of Rainbow are enduring: the heart of Rainbow Community School is the love and connections students develop. They love to learn.

We are now in a position to begin to look outward. With joy, we generously share with the community around us through service learning, philanthropy, and by opening our new community center space. Most exciting of all, now that holistic education is becoming a “trend” and teachers around the world are clamoring to learn how to include mindfulness, social/emotional learning, and other holistic strategies into the classroom, we are ready – prepared to share our knowledge and to help transform education far beyond Asheville. Education, at its best, is reciprocal. Breathe in. Breathe out.

With gratitude,

Renee Owen

GOALS for the 2014-15 School Year

- Further develop rich community partnerships to better serve our local community while enriching services for our students and families.
- Complete the Capital Campaign and the facilities expansion project to provide enough classroom space for enrollment projects and community services.
- Pilot implementation of enhanced STEM education, through the Maker Movement, systems thinking, and engineering training for teachers.

Mission

We develop accomplished, confident, and creative learners who are prepared to be leaders in building a compassionate and environmentally sustainable world.

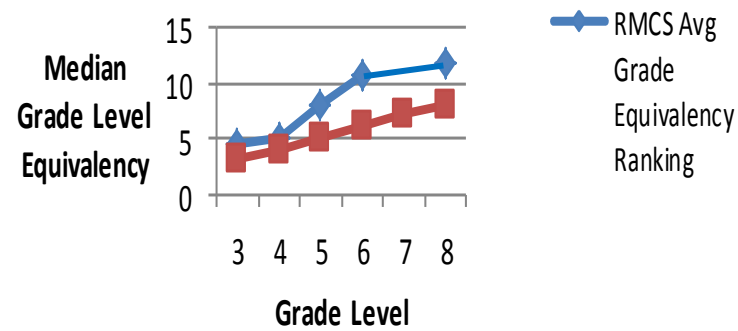
Method

- We provide an engaging, nurturing learning environment to educate the whole child using the seven domains.
- We inspire academic excellence with a program in harmony with the stages of child development.
- We model within our community the kind of world in which we aspire to live.

Academic Data

Stanford 10 Test Results from September 2013 indicate students scoring far above average, compared nationally. The graph shows the typical testing score trend we have at Rainbow every year: students score above average in 3rd grade, and their scores steadily rise throughout the grades. By 7th and 8th grade, students who have been at Rainbow for many years, typically score extremely high. The average grade level equivalency of 8th graders was at nearly the 12th grade level. What does this indicate? It demonstrates that our students truly learn at Rainbow! Students don't score well only because of their natural gifts, but they clearly benefit from the educational program at Rainbow and improve throughout their years.

Rainbow Students Grade Level Rankings in ALL SUBJECTS Compared Nationally 2013



Note: 7th grade scores are not reported due to its enrollment being too small to be reported with confidentiality and with statistical significance.



Playground Completed

Max Mraz and his helpful crew completed the new K-8 playground (Gnome Village) and the new preschool playground. Both playgrounds were designed with findings from cutting edge research regarding how children learn and interact with the environment.

Green Awards

Rainbow is the only school in North Carolina to achieve the Green School of Excellence Award, their top-ranking green status. We were also honored as one of only 78 National Green Ribbon Schools. Both of these awards reflect the sustainable methods we use to manage campus and the part children play, such as worm composting and recycling. Our curriculum is geared to help children grow up to be stewards of the earth, naturally.



Graduating Students Ready for the Future

RCS graduated thirteen students in 2014. Seven are attending Carolina Day School (two with merit scholarships, including one who received the prestigious Highlander Scholarship (top Head of School Award)), one is attending Asheville Christian Academy, and five are enrolled at SILSA, the all-honors program at Asheville High School. Eighth grade speeches described the learning journey of students that took place in a school that was a second home.



Rainbow middle school students regularly tutored younger children through Children First/Communities in Schools. Rainbow adopted Children First and every class participated in service and philanthropy for children in need during the 2013-14 school year.

Every Child a Changemaker

In May, 2014, Rainbow was inducted as a National Changemaker School by the Ashoka Foundation—a huge honor. A changemaker is someone who has the integrity, creativity, intelligence, and courage to make a difference in the world. Ashoka honors Rainbow as a school with a curriculum that is designed to raise children to be compassionate citizens who are empowered to create positive change. We develop changemakers.

Campus Doubles in Size After Tremendous Capital Campaign!

In one swift move Rainbow Community School doubled the size of our campus on January 14, 2014 when we purchased the 2.71 acre West Asheville Church of God at 60 State Street, directly adjacent to our original campus. The property became available in August, 2013 and thanks to an outpouring of support, the \$200,000 down payment was raised by the end of December. The new campus provides an auditorium, an athletic field, parking, and enough classroom space (after renovations are complete) for every grade to enroll 16-20 students. The new campus provides important fiscal security for Rainbow, as we can finally enroll enough students to operate at an efficient size once all spaces in the buildings meet code. After renovations are complete, the outdoor and indoor spaces will make our facility capable of fulfilling the long term goals and vision for Rainbow.



Three acres and three buildings, including an auditorium space and athletic field, were purchased from the Church of God at 60 State Street, and added to campus. Once enough campaign money is raised to implement renovations, there will be adequate classroom space for ALL grades, for the first time in Rainbow's history.