

Changemakers

Rainbow Community School is recognized by the Ashoka Foundation as a National Changemaker School. Ashoka awards fellowships to extra-ordinary social entrepreneurs around the world. To date, there are 3,200 Ashoka Fellows — people who have used grit, innovation, and compassion to make a difference. It is a huge honor to be designated one of 70 Changemaker schools in the country.

Ashoka recognizes that Rainbow Community School is the future of education, and is educating future social entrepreneurs. Several classrooms integrated mini units highlighting real life changemakers and the difference their actions are making on a local, national, and international level. Authentic learning through community service is a key piece of Rainbow's Changemaker identity.



Sixth grade changemakers learn entrepreneurial skills by starting socially beneficial businesses.



Letter from the Executive Director

It seems like every year Rainbow has another banner year! But with the completion of the 2014-15 school year, we find that we have completed some very important milestones. Virtually every goal that was on the strategic plan written in 2012 has now been accomplished, even though some of those goals seemed like “pie in the sky” at the time, such as gaining the facility space we needed. How quickly things progress when a group of thoughtful, committed people work together.

Enjoy reading about the school you helped to make — the Rainbow Community School of today. It is a very special place: an education to behold.

Renee Owen
Executive Director

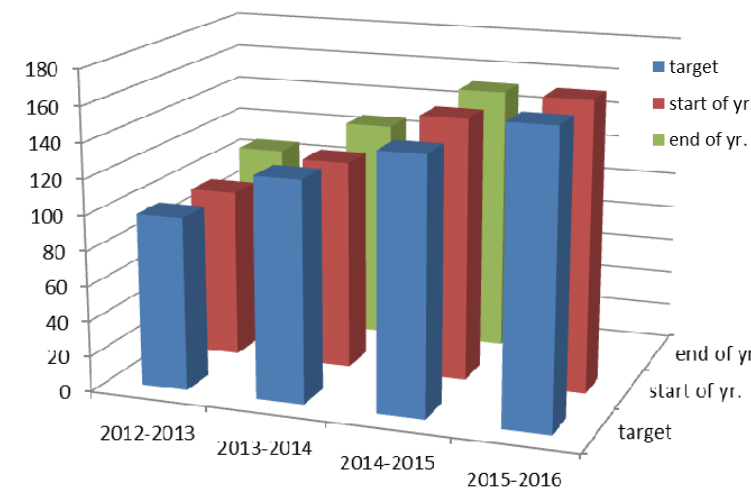


Students enjoy lunch in our new middle school courtyard.

Community Partners and Community Service

Service learning, community service, and establishing local and global partnerships helps students improve academically, develop social and cultural literacy, and work collaboratively to meet a variety of community needs. By playing a significant role in designing, planning, and implementing their service learning and community service projects, students develop practical skills, self esteem, and a sense of community responsibility. The full list of student service projects from the 2014-15 school year is too long to include in the annual report! Some highlights:

- Rainbow partnered with LEAF International to host a multicultural exchange for a full week with the members of the Indigenous Ngabe and Bribri Costa Rican villages. The exchange included sharing our cultural rituals and stories at Rainbow with theirs. Two shamans from their traditions thanked us with a sharing ceremony and blessings with our students, teachers, and parents.
- Rainbow partners with Children First/Communities in Schools to support children who are food-insecure, housing insecure, or have other needs. A portion of our Hoedown funds are donated to Children First and the 2014 donation was \$1,036. Seventh and eighth graders mentored and tutored West Asheville students recommended by Children First. Other service projects benefitting Children First included a warm clothing drive by preschool, a book drive by kindergarten, and a pumpkin drive by the second grade.
- Fifth grade partnered with RiverLink to clean up the French Broad River Park. The fifth graders participated in many RiverLink programs including Kids in the Creek, in which the children conducted water quality tests and learned to identify a variety of aquatic life. Students learned about watersheds and the effects of pollution by participating in the Enviroscape program. The fifth graders also entered poems into RiverLink's Voices of the River Art & Poetry Contest; two of them placed in the competition.



	Target	Start of School Yr.	End of School Yr.
2012-2013	98	96	106
2013-2014	125	119	126
2014-2015	144	149	151
2015-2016	164	164	

Student Body Growth Chart

Capital Improvement

We did it. YOU did it! Ninety-six percent of all families donated, and along with a lot of in-kind donations and help, we renovated the lower level of the auditorium into a middle school space. In two years, we went from a 2.5 acre campus with about 11,000 square feet of indoor space, to a 5 acre campus with over 22,000 square feet of instructional space.

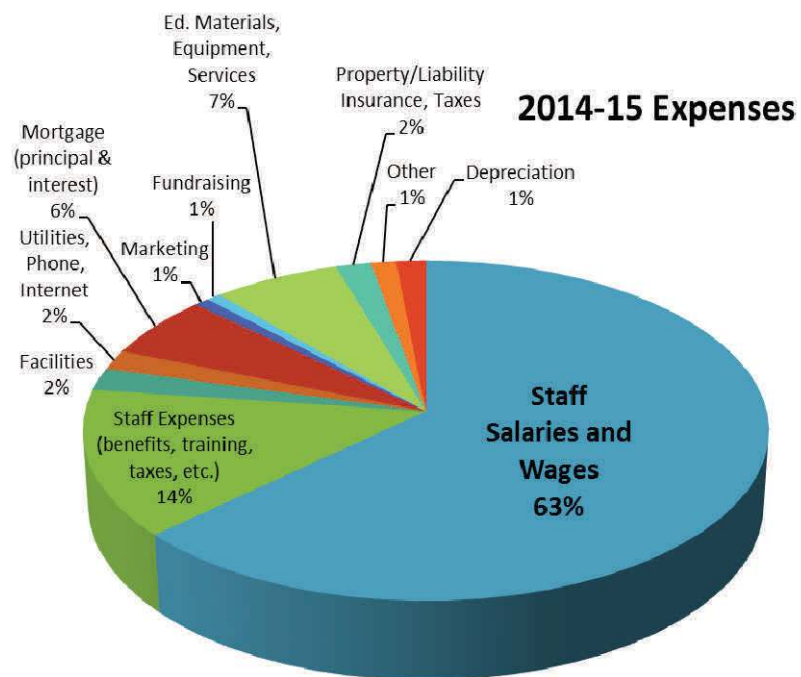
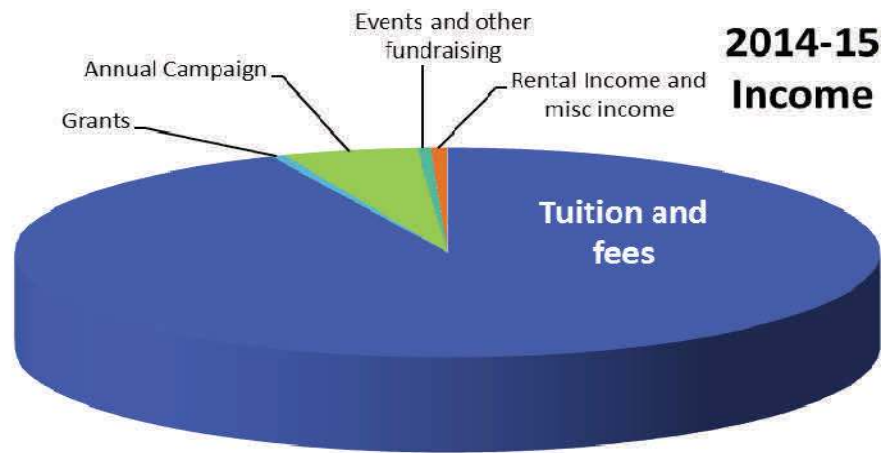
Just in time, we added enough classroom space to accommodate our swelling enrollment. We have exceeded our enrollment targets, and now have a wait list in all but two grades.

Not only is the new space functional and beautiful, it provides us with the ability to be financially secure and truly fulfill our mission and vision for the foreseeable future. Thank you!



2014-15 Fiscal Year Operations

Total Revenues	\$1,990,818
Total Expenditures	\$1,945,428
Difference Remaining:	\$45,390



Capital Growth

\$127,608 was raised during the 2014-15 school year toward the capital construction project, in addition to funds pledged the year prior.

The total cost of construction to renovate the lower floor of the new community building, do required landscaping, and install the athletic field was \$316,000, which was funded by a combination of capital campaign funds and reserve funds.

Financial Stability

The total value of all assets at the end of the 2014-15 fiscal year was estimated at \$3,419,292.

We ended the year with a cash/savings reserve of \$306,000 (down from \$444,588) as building fund reserves were used to fund construction.

Academic Data

While standardized testing cannot possibly convey the complexity of thinking and creativity of Rainbow students, it is interesting how well our students score, and to observe our data trends on the SAT10. For over a decade, our SAT 10 scores have shown a very consistent trend: The average score of Rainbow classes are slightly above average in Reading, Writing, and Math in the lower grades and *extremely* high in the upper grades, with usually a couple of classes being outliers. Our theory regarding this trend is that we have a different trajectory than traditional schools. We introduce rote Reading, Writing, and Math skills slightly later than traditional schools and prep schools, in favor of giving students more time to work on intellectual rigor in content areas, such as Science and Social Studies. This way, we are able to introduce greater challenge later – thus, the particularly high scores in the later grades. In Science and Social Studies, scores are very high throughout the grades– especially in Science, further proof of the theory.

The graph shows all subjects combined (complete battery) on the SAT 10 test from September, 2014. Seventh grade students scored at an 12.1 grade level on average, and eighth graders at an 11.1 grade level on average! Average national percentile rankings were over 80% in all subjects for Omega students. Again, the graph shows 3rd and 4th graders above average, with 7th and 8th graders often scoring in the top 5% compared to their peers across the country.

Rainbow Students' Grade Level Rankings in ALL SUBJECTS Compared Nationally 2014

Grade Level	RCS Avg Grade Equivalency Ranking	National Avg
3	~5.5	~3.5
4	~5.5	~4.5
5	~8.0	~5.5
6	~9.0	~6.5
7	~12.1	~7.5
8	~11.1	~8.5



*Education
from the heart,
for the heart.*

Our mission

We develop accomplished, confident, and creative learners who are prepared to be leaders in building a compassionate and environmentally sustainable world.

The 7 Domains of the Whole Child

SPIRITUAL MENTAL CREATIVE EMOTIONAL SOCIAL NATURAL PHYSICAL

Our method

We provide an engaging, nurturing learning environment to educate the whole child using the seven domains.

We inspire academic excellence with a program in harmony with the stages of child development.

We model within our community the kind of world in which we aspire to live.

2015-16 Improvement Goals

1. Improve racial diversity, inclusion, and equity through affirmative action, racial equity analysis and staff training, with the long-range goal of developing an embedded culture of diversity.
2. Launch the new Middle School program and facility with grace, expanding middle school enrollment by 50% for the 2015-16 school year and adding electives.
3. Explore ways to be a stimulus and a resource for an education revolution.